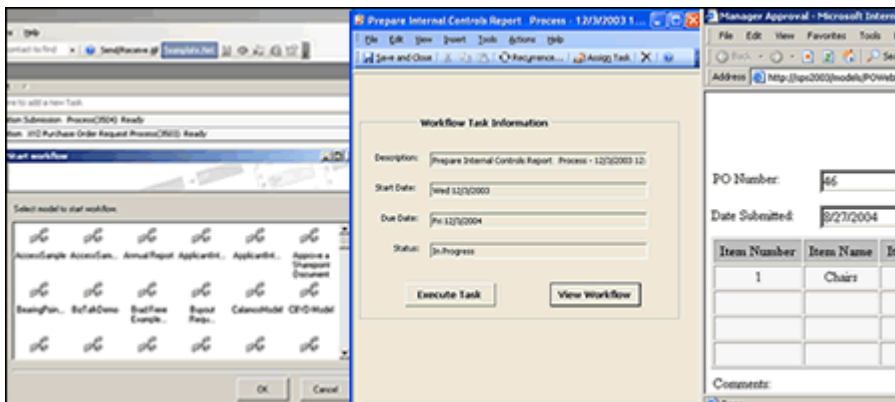


DATASHEET

Captaris Workflow and Microsoft Exchange Server

Captaris Workflow Extends Microsoft Exchange Server Collaboration Capability with Robust Structured Workflow Capabilities



CAPTARIS WORKFLOW

- **Out-of-the-box Functionality** - Captaris Workflow may be integrated with Microsoft Exchange to provide Captaris Workflow Task delivery directly into individual Microsoft Outlook task lists. A workflow may be initiated from within Microsoft Outlook clients or triggered by email arrival events.
- **Empowers Information Workers** - allows anywhere, anytime, any device access.
- **Intuitive Interface** - user interface that is deployable within Microsoft Office System, Sharepoint, or Web delivering streamlined effectiveness, efficiency and accountability.
- **ROI and TCO** - delivers measurable Return on Investment (ROI) and a lower Total Cost of Ownership (TCO) compared to other collaboration and workflow solutions.
- **Flexibility** - customers have the option of using powerful wizards to design and deploy financial or other business related workflows. Migration to the fully Integrated Design Environment (IDE) allows the automation of any business process.

BENEFITS

- **Visual Interface** - a Captaris Workflow solution provides a rich "people to people" user interface that is very easy to learn and use.
- **Delivering a Business Case With Prototypes** - Captaris Workflow is easy to demonstrate to decision makers and the Captaris Rapid Process Justification can assist you in accurately projecting ROI and in building a full business case.

KEY DIFFERENTIATORS

- **Pure Microsoft .NET Technology** - developed using Microsoft Visual Studio .NET, C# and XML Web Services.
- **Ease-of-use** - Captaris Workflow combines robust functionality with ease-of-use for Information Workers, designers, managers and system administrators.

FEATURES AND INTEGRATION

CAPTARIS WORKFLOW PROVIDES EXTENDABLE WORKFLOW FEATURES	
Workflow task delivery to Microsoft Outlook task list	Initiate workflows from Microsoft Outlook
Web and Windows Forms	Database Object, XML Object
Re-useable Custom Actions available within IDE	Parallel Workflow
Graphical Process View which can be used as the user interface	Organizational Chart or Process Hierarchy with extended Profiles
Synchronization of tasks between Microsoft Exchange and Captaris Workflow	Trigger Workflow from Microsoft Exchange or Outlook

The image shows a screenshot of Microsoft Outlook with a workflow task assigned. The task is titled "You've been assigned a task" and is from "worldflow@gdi.com". The task details include: "Hi Administrator, You have been assigned the Finance Approval task for the Purchase Order Request workflow. 1. Execute this task via the Web Portal." To the right, a flowchart titled "XYZ Company Purchase Order Request Workflow" illustrates the process. It starts with a document icon, leading to a "Manager Approval" task. From there, it branches based on "Item Total >= \$10,000" to a "Finance Approval" task, and based on "Item Total < \$10,000" to a "Generate PO" task. Red dashed arrows indicate "Manager Declines" and "Finance Declines" paths.

FOR MORE INFORMATION

Captaris Business Information Delivery solutions help organizations of all sizes automate the information and document flow throughout the information lifecycle (capture, process, archive, deliver). With a comprehensive suite of software and services, Captaris helps organizations to grow revenues and increase profits while meeting compliance goals. Through a global distribution network of leading enterprise technology partners, Captaris has installed more than 90,000 systems in 95 countries in companies of all sizes, including the entire Fortune 100. For more information, visit www.captaris.com or call +1.800.443.0806.

©2005 Captaris. All rights reserved. No part of this publication may be reproduced, transmitted, transcribed, stored in a retrieval system, or translated into any language in any form by any means without the written permission of Captaris. Captaris products Alchemy, Interchange, RightFax and Captaris Workflow are trademarks of Captaris. All other company, brand and product names are the property and/or trademarks of their respective companies. MC0010108 RB0405