



Automate the Processing of HCFA 1500, UB-92, and Other Complex Forms

Many health insurance organizations have increased their competitive efficiency by scanning their paper-based claims and archiving the resulting images for quick retrieval. But storing images is only half the battle. The biggest productivity benefits and cost savings come from automatically extracting data from the claim forms.

In the past, the complexity of HCFA 1500 and UB-92 forms forced insurance companies to hand-key dozens of pieces of data per form. Custom software has been available to automatically recognize and extract this data, but at a cost and complexity that was prohibitive for all but the very top tier of insurance companies.

Now, Kofax offers a solution that provides unsurpassed data recognition for insurance claims at a price that any company can justify. Based on the world's most popular capture platform, Ascent for Health Insurance offers a truly scalable solution that can be deployed as a mid-volume application, and easily grown to meet the needs of the entire enterprise.

Powerful, Scalable, Customizable

Ascent for Health Insurance is built on the industry-leading Ascent platform and powered by Neurascript INDICIUS to deliver highly accurate data recognition and revolutionary field- and form-level validation. The powerful data recognition engine dramatically reduces the need for manual data entry, and the innovative validation capabilities ensure the accuracy and integrity of the data delivered to your claims processing and content management systems.

Ascent for Health Insurance takes advantage of CPT® and ICD-9 databases to automatically detect and flag invalid procedure and diagnostic codes. The system can use your client databases or any others to validate patient and doctor data, and can use the current USPS database to authenticate facility and physician addresses. It can also perform crosschecks on fields to further ensure accuracy. The overall result is faster, more accurate claims processing.

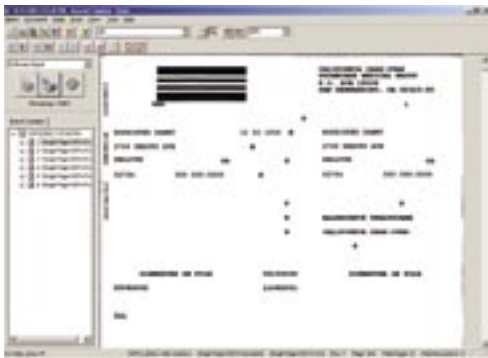
The modular Ascent architecture gives you a single-platform solution for capturing information from machine-printed forms, hand-printed forms, unstructured documents, and even electronic data streams, eliminating the cost and effort of maintaining multiple capture systems and letting you create a workflow that fits your business needs: Process single- or multi-page claims, with or without attachments. Create one document containing the claim form and all attachments, or automatically separate them. Use fast "key from image" for hand-printed and other forms that cannot be automated, and use the same validations as for the automated claims.

Ascent for Health Insurance is a packaged solution that leverages the expertise of the leader in information capture — Kofax — to solve your most complex forms processing needs.

“Our Ascent solution has significantly improved our efficiency. Our data is much more accurate and reliable, and we can easily handle increases in volume.”

— Dave Thomas, ProtoCall





Scanning with Ascent ensures high-quality images and unmatched scanner compatibility.



Ascent for Health Insurance enables quicker validation by using data overlays to show the captured data in the context of the original form.



Ascent for Health Insurance saves time and keystrokes by clearly highlighting individual suspect characters for repair, enabling entry-level staff to be productive without training.



Ascent for Health Insurance presents data from tables in a convenient, easy-to-read format.

Highlights

- The Health Insurance Edition is built on the industry-leading Ascent platform to ensure scalability, flexibility, unmatched compatibility with scanners and data sources, and seamless delivery of data to ASCII, SQL, ODBC, and more than 80 content management systems, as well as the NSF 3.1 format and ANSI 837 standard for Medicare.
- Ascent for Health Insurance is powered by Neurascript INDICIUS, dramatically reducing the need for manual data entry and accelerating claims processing through unsurpassed recognition accuracy and fast validation.
- Extensive validation and verification rules ensure data accuracy and compliance with CMS (HCFA) and HIPAA requirements.
- System administration is controlled through standard Ascent management tools that clearly represent the system status and provide full control over operations. Reporting metrics highlight the performance of the system and each operator.

For more information

Visit the Kofax web site at www.kofax.com for more information or give us a call for further assistance!

The Operating System of Capture

Kofax
 16245 Laguna Canyon Rd.
 Irvine, CA 92618-3603 U.S.A.
 Phone: 949-727-1733
 Fax: 949-727-3144
 E-mail: info@kofax.com
www.kofax.com

Koning Albert 1 Laan 64-66
 B - 1780 Wemmel, Belgium
 Phone: +32 2 456 17 20
 Fax: +32 2 456 17 21



KOFAX[®]
 A DICOM GROUP COMPANY